

## HEX & SQUARE COLLET BLOCK SET



5 PC SET  
Item 3900-1620

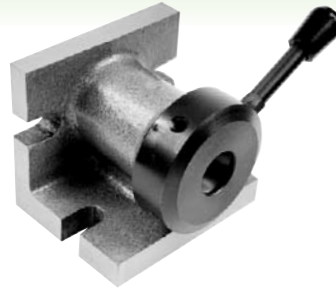
**\$6462**  
(E)

- Capacity for standard 5C collets: 1/16" ~1-1/16".
- Overall Dimensions: 1-3/4" x 1-3/4" x 3-1/4".
- For fast set-ups on milling machines, lathes, surface grinders & drill presses.
- For parallel, square or hex shapes as well as for cross hole drilling at 60°, 90° or 120°.
- Made of tool steel hardened and ground to .0005" flatness, squareness and parallelism.

### 5 PC INCLUDES:

Square, Hex, Quick Acting Rings & Lever collet closer cam operated.

## 5C H/V COLLET FIXTURE



- For any standard 5C collet up to 1-1/8".
- Can be used in either horizontal or vertical position.
- Lever movement to open or close collet.
- Base Size: 4-1/4" x 4-1/4".
- Height: 4-1/4".
- W.T.: 12 lbs

Item 3900-1621

**\$5507**  
(E)

## 5C INDEXING SPIN JIG

- Utilizes 5C collets to 1-1/8" .
- Indexing fixture for use on Milling Machines, Grinders and Inspection Equipment.

- Hardened and ground spindle.
- 0.0004 T.I.R. spindle accuracy.
- Direct indexing in 10 steps.
- Graduated in 5° increments.
- Precision ground indexing plate.
- Weight: 20 lbs.



Item 3900-1604

**\$5760**  
(E)

## 5C H/V ANGLE COLLET FIXTURE

- For any standard 5C collet
- Horizontal or vertical position.
- Lever movement to open or close collet.
- Base Size (horizontal): 5 x 4"

- Base Size (vertical): 5 x 3-5/8"
- Height (H/V): 3-5/8" / 4"



Item 3900-1625

**\$6175**  
(E)

## ANGLE END MILL GRINDING FIXTURE

- This fixture takes 5C round collets for grinding end mill 1/16" ~ 1-1/8" .
- Shell mills can easily be held with straight shank arbors.
- Solid negative ball stops with 15° spacing fast & easy set-ups.
- Can be used for grinding 2-3-4-6-8 and 12 flute end mills.
- Clearance & relief angles are built into the base.
- Solid 2-1/2" X 4-1/2" base bottom ground for sure contact.
- Black oxide finish.
- 5C collet not included.



Item 3600-0056

**\$6140**  
(E)

5C COLLET IS NOT INCLUDED

## 5C HORIZONTAL & VERTICAL COLLET INDEXER

- Utilizes 5C collets.
- Rapid opening and closing is performed with a lever collet closer with a leverage ratio of 100 to 1.
- Convenient ratchet mounted on front of spindle provides rapid indexing.
- Index plate has 24 index locations (15° increments) that may be masked off for greater variety in applications).

Item 3900-1607

**\$33985**  
(E)



HIGH PRECISION

Threaded spindle is hardened and ground (2-1/4"-8 TPI)

### SPECIFICATIONS

### VARIATION MAX.

Dividing spindle concentricity.....	0.0002"
Cylindrical center bore (per 1" ) concentricity.....	0.0008"
Spindle center line parallelism.....	0.0008"
Base to face squareness.....	0.0008"
Center slot to dividing spindle concentricity.....	0.0008"
Lateral offset of center slot to dividing spindle.....	0.0008"

## 5C COLLET CHUCKS

- Designed for use with 5C collets
- Used for turning, facing, boring, grinding and milling on center lathes and grinding machines
- Key-operated scroll provides a uniform distortion-free clamping of workpieces and low collet exchange times
- Chuck wrench included



Item 3900-4714

**\$34900**

SPECIFICATION	Item#	Spindle	Price (E)
Chuck Size.....	3900-4714	Plain Back	349.00
Collet capacity.....	3900-4715	D1-4	385.90
Weight.....	3900-4716	D1-6	420.00
Max. RPM.....	3900-4718	D1-8	525.00

Item#	Spindle	Price (E)
3900-4714	Plain Back	349.00
3900-4715	D1-4	385.90
3900-4716	D1-6	420.00
3900-4718	D1-8	525.00